

NINTH ANNUAL SALE

Hybrids FOR profit

BULL & FEMALE SALE



36L

THURSDAY, APRIL 11, 2019

1:00 P.M. • Aberdeen Livestock 'West Barn', Aberdeen, SD

Hybrids FOR profit

THURSDAY, APRIL 11, 2019

1:00 P.M. • Aberdeen Livestock 'West Barn', Aberdeen, SD



It is with great pleasure we welcome you to our 9th Annual Hybrids For Profit Sale. We are especially excited to have the opportunity to introduce you to this year's sale offering. We know most of you within our region experienced similar weather conditions as we did but for those that did not, well, it was quite the winter to say the least. The bulls have been through some of the worst of conditions and have somehow managed to not only survive but thrive. We think this is a true testimony to what the Chiangus breed has to offer, hybrid vigor, heartiness and exceptional performance even in the toughest of conditions or climates.

We had a successful fall sale season selling elite Chiangus heifers on our Black Velvet Female Sale and also at the Black Hills Stock Show. With that being said, we will not be offering any females for public auction during this year's sale however we are extremely excited to bring you some elite genetic lots. These lots are not just added lots in our opinion but rather sale features. We want to thank the Beckett Ranch for their continued support in the sale not only with these exceptional genetic matings but also with their bull offering.

All of the bulls were fed here in Aberdeen since the beginning of October and were together on one level playing field allowing for an accurate on feed performance evaluation both individually and as a whole. We have culled twice out of the pen to ensure only the highest performing, structurally correct, complete and well balanced offering we can bring to you out of two different herds. While many of the bulls also offer an incredible eye appeal, all of them possess a disposition we are proud of! We know each operation is looking for something slightly different and unique to increase their herd performance, please give us a call to visit about the offering. We would love to help you find your next herd sire and have a proven track record of matching sight unseen customers with sires to stand the test of time in their herds.

We thank you for your interest and trust in our programs and look forward to hearing from you or better yet, seeing you in person April 11th in Aberdeen, SD. Yearling weights, scrotal measurements and ultrasound data along with more photos will be available closer to sale date on our website, DVAuction & Facebook.

Sincerely,
Justin Holt Cattle
Justin & Kali Holt

Justin, Kali, Charlee, Cooper & Jayden Holt
Justin: 605.380.5002 or Kali: 605.730.1870
13319-378th Ave., Aberdeen, SD 57401

JHC
Justin Holt Cattle

GUEST CONSIGNOR...



BECKETT RANCH

Troy: 605.204.0394
Tember: 605.204.0393
21081 Beckett Ranch Rd.
Miller, SD 57362

SCHEDULE...

Wednesday, April 10th

- 3:00 P.M. Cattle available for viewing at the sale barn
- 4:00 P.M. Appetizers & cattlemen's social at the sale barn

Thursday, April 11th

- 11:30 A.M. Complementary lunch served
- 1:00 P.M. 2019 Hybrids for Profit Sale**

LOCATION...

Aberdeen Livestock Sales Co 'West Barn'605.225.2062
38458 133rd St., Aberdeen, SD 57401

AUCTIONEER... Colonel C.K. "Sonny" Booth.....918.533.5587

SPECIAL ASSIGNMENT...

Alan Sears, Sears Marketing Services.....970.396.7521

SALE DAY PHONES...

Justin Holt.....605.380.5002 Kali Holt605.730.1870
Alan Sears970.396.7521 Troy Beckett605.204.0394

LIVESTOCK PRESS/SALE CONSULTANTS...

Randy Rasby, *Livestock Plus*308.539.6195
Jim Scheel, *Cattle Business Weekly*.....605.545.1521
Dustin Hurlbut, *ACA*605.380.8052
Justin Dikoff, *DVAuctions*605.290.0635

ACCOMMODATIONS...

Best Western Ramkota Hotel.....605.229.4040
Super 8 Motel (West)605.225.1711

VETERINARIAN ...

Dr. Gregory Adolf, DVM, Northern Plains Animal Health.....605.226.3816



CAN'T MAKE THE SALE??

SALE WILL BE BROADCAST LIVE ...

If you will be unable to attend the sale, please contact any of the sale day phones or representatives to secure a bidder number and place orders. You may also bid online the day of sale at www.dvauction.com or contact Justin Dikoff at 605.290.0635.

CHIANGUS BULLS

1 JHC Mr. Flight Leader 98F

02.04.18 ACA# 397027 2CA Bull 20.12% CA

		EPD	ACC
MEFC NORTHERN ADVANTAGE 208Z			
JHC NORTHERN MOMENTUM 081B			
MEFC MS MOMENTUM 081X		CED 10	.1
		BW 2.6	.18
PLAINVIEW LUTTON E102		WW 66	.19
JHC MS. LUTTON 0098X		YW 98	.18
RDD MISS ACE 1P 2CA		MILK 18	.1

BW: 90 Adj. WW: 792

- Full Sib in blood to JHC/WEBB Dakota Dreamer.
- High performing, high volume bull with added length of body.
- Outstanding disposition.
- He will produce outstanding calves – steers, bulls and females alike.
- Top 20% CED – Top 3% WW – Top 5% YW – Top 15% Milk



LOT 1

2 JHC/WEBB Mr. Fern 324F ET

03.04.18 ACA# 397491 2CA Bull 20.12% CA

		EPD	ACC
MEFC NORTHERN ADVANTAGE 208Z			
JHC NORTHERN MOMENTUM 081B			
MEFC MS MOMENTUM 081X		CED 10	.08
		BW 1.9	.14
PLAINVIEW LUTTON E102		WW 60	.12
HBSC MS WIGGLY 328A 1CA		YW 88	.12
RDD MISS ACE 1P 2CA		MILK 18	.08

BW: 94 Adj. WW: 697

- ET Full Sib to JHC/WEBB Dakota Dreamer bull currently working at Sugar Creek Farms, IA.
- The "Northern Momentum" sired cattle are really working for us.
- He will add pounds and power to a set of calves!
- Top 20% CED – Top 10% WW – Top 10% YW – Top 15% Milk



JHC/WEBB Dakota Dreamer, a full brother to Lot 2.

3 JHC/WEBB Mr. Franklin 361F ET

02.27.18 ACA# 396255 2CA Bull 21.02% CA

		EPD	ACC
MEFC NORTHERN ADVANTAGE 208Z			
JHC NORTHERN MOMENTUM 081B			
MEFC MS MOMENTUM 081X		CED 10	.08
		BW 2.0	.16
STYLES LUT P301		WW 59	.13
JHC MS BARBIE 201B		YW 87	.13
HBSC MS ACE 201W		MILK 15	.08

BW: 94 Adj. WW: 832

- Stout made and rugged, built with the phenotype we like to see in the "Hybrids for Profit Sale".
- Lot 3 and 4 are ET, full brothers with many similarities.
- Top 20% CED – Top 10% WW – Top 15% YW



LOT 3

CHIANGUS BULLS



4 JHC/WEBB Mr. Frederick 634F ET

02.25.18 ACA# 396256 2CA Bull 21.02% CA

MEFC NORTHERN ADVANTAGE 208Z	EPD	ACC
JHC NORTHERN MOMENTUM 081B	CED 10	.08
MEFC MS MOMENTUM 081X	BW 2	.16
STYLES LUT P301	WW 59	.13
JHC MS BARBIE 201B	YW 87	.13
HBSC MS ACE 201W	MILK 15	.08

BW: 96 Adj. WW: 773

- Great Structure and big hiped.
- Will be able to travel all day.
- Backed by a tremendous cow family.
- Top 20% CED - Top 10% WW - Top 15% YW



HBSC Annabelle 678X, dam of Lot 5 & 6.

5 JHC Mr. Furrly 2F ET

04.04.18 ACA# 397643 2CA Bull 20.12% CA

MEFC NORTHERN ADVANTAGE 208Z	EPD	ACC
JHC NORTHERN MOMENTUM 081B	CED 10	.08
MEFC MS MOMENTUM 081X	BW 2	.16
PLAINVIEW LUTTON E102	WW 60	.12
HBSC ANNABELLE 678X	YW 89	.13
RDD MISS ACE 1P 2CA	MILK 18	.09

BW: 90 Adj. WW: 753

- Lots 5 and 6 are full brothers
- Lot 5 is an ET full sib To JHC First Lady who sold at the 2019 BHSS and was named Reserve Champion Overall Chi Influenced Female.
- If his full sister looks like this, imagine what his own calves will look like!
- Top 20% CED - Top 10% WW - Top 10% YW - Top 15% Milk



JHC First Lady, a full sib to Lots 5 & 6.



JHC Northern Momentum 081B, sire of Lots 1 - 7.

6 JHC Mr. Farry 678F

05.15.18 ACA# 397642 2CA Bull 20.12% CA

MEFC NORTHERN ADVANTAGE 208Z	EPD	ACC
JHC NORTHERN MOMENTUM 081B	CED 10	.10
MEFC MS MOMENTUM 081X	BW 1.5	.18
PLAINVIEW LUTTON E102	WW 55	.20
HBSC ANNABELLE 678X	YW 81	.18
RDD MISS ACE 1P 2CA	MILK 19	.11

BW: 90 Adj. WW: 773

- A natural calf out of 2011 National Champion Chiangus Female Annabelle.
- Annabelle got hurt last summer but still managed to raise this good looking young herd sire prospect. He has really done well since weaning considering he was playing the "catch-up."
- Maternal brother is working for Doug Schmit, ND.
- Top 20% CED - Top 15% WW - Top 20% YW - Top 15% Milk

CHIANGUS BULLS

7 JHC Mr. Fuzzy 109F

03.15.18 ACA# 397025 CA Bull 15.76% CA

MEFC NORTHERN ADVANTAGE 208Z
JHC NORTHERN MOMENTUM 081B
 MEFC MS MOMENTUM 081X

	EPD	ACC
CE	10	.06
BW	1.7	.24
WW	59	.15
YW	85	.15
MILK	17	.05

COMMERCIAL COW 441C

BW: 92 Adj. WW: 792

- Another Northern Momentum son that is very complete and fault free.
- Easy feeding, high performing kind of bull.
- Checks all of the boxes for us!
- Top 10% WW – Top 15% YW – Top 20% Milk

8 JHC/TTBR Frank 417F ET

02.23.18 ACA# 396257 PCA Bull 26.14% CA

JSC ADVANTAGE 257T
MEFC NORTHERN ADVANTAGE 208Z
 TTBR MS IMPROVE 7032X 1CA

	EPD	ACC
CE	10	.10
BW	1.0	.19
WW	52	.16
YW	73	.16
MILK	15	.13

CTR SUCCESS 02K 2CA
TTBR HARMONY 811U PCA
 TTBR MST POWER 001K 2CA

BW: 96 Adj. WW: 817

- Power house! Higher % Chi bull we just love!
- The dam, "Harmony" was a featured donor in last years sale!
- Several full sb ET calves were highly sought after in past sales.
- Top 20% CED – Top 20% WW



*JHC Ms. Esther 121E ET
 a full sib and high selling
 female in 2018 bought by
 MMA Chiangus, Texas.*



*JHC Mr E-Harmony, a full sib to Lot 8,
 sold to Dry Fork Ranch, Colorado*

9 JHC Mr. Ferrari 081F

03.20.18 ACA# 396253 2CA Bull 18.04% CA

EXCLUSIVE USE
 CARD THE SITUATION
 GGCC MS WIZ 67U
 MCA TL BY-PRODUCT 269-1394
JHC MS. PRODUCT 081A
 MEFC MS MOMENTUM 081X

	EPD	ACC
CE	9	.10
BW	1.4	.27
WW	60	.20
YW	93	.18
MILK	18	.09

BW: 88 Adj. WW: 800

- Stand out since day one!
- His dam is getting it done for JHC.
- Two maternal sibs went to Schlecter Farms in last year's sale.
- Dam, A081 has recently calved and has done it again with a full sib bull to Ferrari that will no doubt be a sale feature in next year's Hybrids For Profit Sale!
- Top 20% CED – Top 3% WW – Top 5% YW – Top 15% Milk



LOT 9

DVAuction

Broadcasting Real-Time Auctions

**CAN'T MAKE THE SALE??
 SALE WILL BE BROADCAST LIVE ...**

If you will be unable to attend the sale, please contact any of the sale day phones or representatives to secure a bidder number and place orders. You may also bid online the day of sale at www.dvauction.com or contact Justin Dikoff at 605.290.0635.

CHIANGUS BULLS



10 TTBR JHC Fort Knox 919F PCA ET

02.28.18 ACA# 397558 PCA Bull 22.38% CA

EXCLUSIVE USE	CARD THE SITUATION	EPD		ACC
		EPD	ACC	
TTBR MS SUCCESS 6043S	GGCC MS WIZ 67U	CED 9	.08	.17
	CTR SUCCESS 02K 2CA	BW 2.2	.13	
BEF MS COMMITMENT 8K 2CA		WW 50	.13	.09
		YW 74	.13	
		MILK 13	.09	

BW: 98 Adj. WW: 748

- He will sire calves that are easy handling and easy feeding with added length of body.
- Full sib heifer sold to McCollum, TX last September.
- Consistent mating with great Dam, one of the top Donors for Becketts.
- Top 20% CED - Top 25% WW

LOT 10



11 JHC Mr. Felix 201F

04.01.18 ACA# 396254 PCA Bull 17.74% CA

EXCLUSIVE USE	CARD THE SITUATION	EPD		ACC
		EPD	ACC	
HBSC MS ACE 201W	GGCC MS WIZ 67U	CED 9	.10	.28
	RDD DESTINY'S ACE	BW 1.9	.21	
		WW 53	.21	.19
		YW 80	.19	
	RDD 169J FOXY 365 P201 2CA	MILK 16	.09	

BW: 88 Adj. WW: 717

- Puppy dog gentle with good looks.
- The Exclusive Use cattle have done a great job for us and this guy's dam is one of the best - she likely has one of our best calves on the ground this spring at ten-years-old.
- Keep all the daughters out of this guy!
- Maternal sib is working for Bottum Bros., Tulare, SD
- Top 20% WW - Top 20% YW - Top 25% Milk

Exclusive Use, sire of Lots 9, 10 and 11.



12 JHC/WEBB Mr. Fire Ball 2001F

03.02.18 ACA# 397493 1CA Bull 14.06% CA

MUSGRAVE SKY HIGH 1535	MUSGRAVE BIG SKY	EPD		ACC
		EPD	ACC	
HBSC MS TOMMY Z201	FLAG QUEEN W 00649	CED 12	.16	.22
	RDD TOMMY BOY PCA	BW 1.4	.19	
		WW 67	.19	.19
		YW 103	.19	
	RDD 169J FOXY 365 P201 2CA	MILK 19	.15	

BW: 88 Adj. WW: 749

- Wide load!! Easy fleshing, easy doing and easy going are all the best ways to describe this guy!
- Only Sky High in the offering this year, expect more for 2020!
- Been at the very top of the crop since day one. His photo may not show it but he is as deep as they come!
- Top 10% CED - Top 2% WW - Top 3% YW - Top 15% Milk

LOT 12

CHIANGUS BULLS

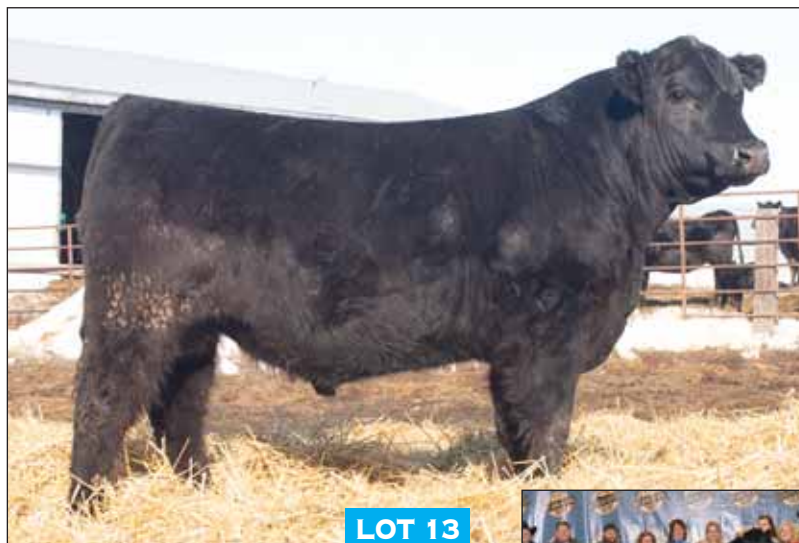
13 JHC Mr. Freddie 6F ET

03.14.18 ACA# 397021 PCA Bull 16.38% CA

		EPD	ACC
SCAR MR DEEDS A579 2CA	SCAR MR LUT 166Y	CED 11	.09
	RDD ACES ANGEL	BW 0.7	.17
RDD 169J FOXY 365 P201 2CA	RDD MR 365 169J 1CA	WW 46	.13
	RDD MS FAME 772 400M	YW 63	.13
		MILK 19	.09

BW: 86 Adj. WW: 800

- Full Sib to the 2017 Supreme Champion Female at the Black Hills Stock Show.
- This bull offers superb phenotype with added mass and a great disposition.
- Top 15% CED - Top 15% Milk



Cookie, a full sib to Lot 13.

14 TTBR JHC Forklift 419F PCA

03.07.18 ACA# 397560 PCA Bull 24.32% CA

		EPD	ACC
HBSC MR ACE 3W	RDD DESTINYS ACE	CED 9	.12
	RDD DANICA 2CA	BW 2.1	.31
TTBR MS NOR AD 419B PCA	MEFC NORTHERN ADVANTAGE 208Z	WW 54	.22
	HBSC FERGIE 42P	YW 80	.21
		MILK 19	.12

BW: 86 Adj. WW: 661

- This guy didn't get as cold this winter as some of the others thanks to his tremendous hair coat!
- The Double Down's never seem to go out of style and are a trusted mating!
- Great phenotype bull that does a lot of good.
- Top 20% WW - Top 20% YW - Top 15% Milk



15 TTBR JHC Firebomb 295F PCA

03.24.18 ACA# 397562 2CA Bull 20.05% CA

		EPD	ACC
BMS BATTLESHIP	BMS XTRAORDINARY	CED 7	.10
	BMS WHA CHA	BW 3.0	.30
TTBR MS D DOWN 295Z 1CA	HBSC MR ACE 3W	WW 62	.21
	TTBR MS TOMMY 596R	YW 91	.20
		MILK 16	.09

BW: 92 Adj. WW: 690

- A very well balanced, structurally correct, good looking herd bull prospect.
- Sired by the popular Battleship bull and a highly productive "Double Down" daughter.
- One of my favorites since weaning.
- Top 5% WW - Top 10% YW - Top 25% Milk



CHIANGUS BULLS

16 TTBR JHC Flightdeck 194F PCA

04.07.18 ACA# 397563 PCA Bull 19.94% CA

		EPD	ACC
BMS BATTLESHIP	BMS XTRAORDINARY	CEP	10 .09
	BMS WHA CHA	BW	1.2 .29
	JSC ADVANTAGE 257T	WW	55 .21
	TTBR MS ADVANT 194Y 2CA	YW	74 .20
	DCBR BECKY JO 517E 1CA	MILK	17 .08

BW: 91 Adj. WW: 701

- Will inject a square hip and added muscle to a set of feeder calves.
- Great temperament
- Very well balanced and good footed.
- Top 20% CED – Top 15% WW – Top 20% Milk

18 TTBR JHC Fort Worth 726F

03.08.18 ACA# 397561 1CM Bull 13.38 CA / 14.06% MA

		EPD	ACC
S A V NET WORTH 4200	S A V 8180 TRAVELER 004	CEP	8 .19
	S A V MAY 2410	BW	2.5 .33
	THMT FED EX 2CA	WW	50 .26
	TTBR MS FED EX 726T 1CM	YW	77 .25
	RMG MS. DESTINY 326C 2CM	MILK	21 .19

BW: 89 Adj. WW: 659

- Net Worth/ Fed Ex mating – should produce the right kind in just about anyone's herd with a mating like that.
- Top 25% WW – Top 25% YW – Top 10% Milk

20 JHC Mr. Forte 239F

03.01.18 ACA# 397022 2CA Bull 5.64% CA

		EPD	ACC
RDD NEW DIRECTION 123N 1CA	C A FUTURE DIRECTION 5321	CEP	14 .20
	RDD MS TRACER L251	BW	-1.5 .30
	PVF INSIGHT 0129	WW	48 .25
JHC MS. INSIGHT 2407D ET		YW	68 .25
	HBSC MS MONEY MAKER U407	MILK	24 .17

BW: 78 Adj. WW: 681

17 TTBR JHC Foghorn 28F 2CA ET

02.27.18 ACA# 397564 PCA Bull 25.46% CA

		EPD	ACC
QOCR MR LUT SUCCESS 854	PLAINVIEW LUTTON E102	CEP	8 .10
	QCCR SUCCESS FED EX 354	BW	2.8 .18
	RDD TOMMY BOY PCA	WW	50 .14
TTBR TOMMY GIRL 7011T PCA		YW	69 .14
	TTBR MS POWER 701G 2CA	MILK	18 .11

BW: 91 Adj. WW: 665

- Check out the high percent Chi Blood
- Added stretch and smooth made.

19 TTBR JHC Finalist 626F

02.26.18 ACA# 397559 1CM Bull 10.23% CA

		EPD	ACC
S A V FINAL ANSWER 0035	SITZ TRAVELER 8180	CEP	13 .22
	S A V EMULOUS 8145	BW	-1.2 .33
	BMS BATTLESHIP	WW	66 .26
TTBR MS B SHIP 626D		YW	96 .25
	TTBR MS FED EX 726T 1CM	MILK	20 .18

BW: 72 Adj. WW: 753

- Should work on heifers
- Check out his set of numbers!
- He has been a great gainer since weaning.
- Top 4% CED – Top 3% WW – Top 5% YW – Top 10% Milk

- Should work on heifers.
- Female keeping kind of sire!
- Time tested genetics on the sire side.
- New Direction was used for many years and sired calving ease and quality!
- Top 2% CED – Top 3% Milk

TERMS & CONDITIONS

TERMS – Terms of the sale are cash or check (with proper ID) payable to Justin Holt Cattle. Cattle will not be released from the Aberdeen Livestock Barn until payment or satisfactory arrangements for payment have been made and approved by the consignor. The consignor reserves the right to require a certified check as settlement before releasing any cattle. All lots offered sell under the standard terms and conditions endorsed by the American Chianina Association/American Simmental Association. RETAINED INTERESTS – Justin Holt Cattle & Guest Consignors are selling 2/3 interest and full possession on all bulls offered. They are retaining a one-third revenue sharing semen interest only. This means you have full control, possession and all salvage rights. PURCHASES & RISKS – All animals are at owners risk prior to sale and become property of the buyer as soon as declared sold by the auctioneer. INSURANCE – Available through Krohmer Agency, Inc. day of sale. BIDDING – All lots sell to the highest bidder. Any disputes or challenges regarding bids will be settled by the auctioneer and ring men. The auctioneer's decision will be final. ABSENTEE BIDDING – If you will be unable to attend the sale, please contact Justin, Kali, Alan Sears or any of the sale day phones or livestock press representatives to secure a bidder number and place orders, or you may also bid online the day of sale at www.dvauction.com. GUARANTEE – We highly recommend purchasing livestock insurance on all purchases to insure adequate return on your investment if something should happen. Bulls will be accompanied by a semen analysis cer-

tificate. All bulls selling at \$2,750 or higher are selling fully guaranteed for the first breeding season (120 days). If you have an issue with a loss of use due to non-breeding, please contact us immediately so that we may provide a suitable replacement if available or issue a credit on future purchases less salvage value. ANNOUNCEMENTS – Announcements from the auction block will take precedence over the printed material in this catalog and other announcements. LIABILITIES – All persons who attend this sale do so at their own risk. Justin Holt Cattle, Aberdeen Livestock or any other consignee's assume no liabilities for any accidents that may occur. The auctioneer or consignee's assume no liability for loss or injury to the livestock due to theft, mysterious disappearance, sickness, improper handling or an act of God. REGISTRATIONS – Registered animals that are selling are registered with the American Chianina Association & American Simmental Association unless otherwise stated either in catalog or on the block. Registration certificates will be transferred to the new owner within 30 days of the sale. Please be sure to leave complete and accurate transfer instructions with the sale clerk at the time of settlement or timely transfers cannot be guaranteed. HERD HEALTH – Our bulls have been treated with the following: Ultrabec 7, EnForce III, PHM-1, Dectomax Injectable & Dectomax Pour On. All animals will be accompanied by proper health certificates making them eligible for interstate shipment. Prospective buyers should make themselves aware of health requirements for their respective states.

CHIANGUS BULLS

21 TTBR JHC Floorboard 205F 1CA

03.23.18 ACA# 397566 1CA Bull 130.35% CA

SILVEIRAS STYLE 9303

GAMBLES HOT ROD

SILVEIRAS ELBA 2520

MEFC LEVERAGE 945W

CLASSIC MERCEDES 509Z

YR MERCEDES 509P

	EPD	ACC
CED	10	.17
BW	1.0	.31
WW	43	.25
YW	61	.24
MILK	16	.17

BW: 87 Adj. WW: 609

- Got the cool look.
- If improving your maternal program is a goal – this dude will sire some great replacement females along with some show heifer prospects!
- Top 20% CED – Top 25% Milk



Silveiras Style 9303, sire of Lot 21.

22 Mr First Class 822F

04.16.18 ACA# 395429 CA Bull 12.39% CA

JHC/ZMZ MR. D - BACK 814D

JSC MR LINEBACKER 807Z

ZMZ ZIVA

HCKA 603

	EPD	ACC
CED	11	.05
BW	0.9	.14
WW	51	.10
YW	74	.12
MILK	15	.04

BW: 76 Adj. WW: 756

- Made in a very complete, eye appealing package!!
- Extremely clean fronted and smooth shouldered
- Ranks in the top 15% in CED, 25% BW, and 30% WW!
- Keep his daughters!!!!
- Consigned by Huss Cattle



23 Mr Fedex 814F

04.05.18 ACA# 395430 2CA Bull 18.59% CA

JHC/ZMZ MR. D - BACK 814D

JSC MR LINEBACKER 807Z

ZMZ ZIVA

JHC MS. DESTINY 0309B

STYLES LUT P301

JHC MS. DESTINY 0309Z

	EPD	ACC
CED	10	.10
BW	1.3	.21
WW	52	.16
YW	74	.18
MILK	14	.09

BW: Adj. WW:

- He will add pounds!
- Long as can be with a ton of width
- Consigned by Huss Cattle



CHIANGUS BULLS



LOT 24

24 HCKA Everclear 350E

08.02.17 ACA# 392888 1CA Bull 10.535% CA

		EPD	ACC
H C A MR LUX 06X			
HB GUYMAN 485	BASIN EILEEN LASS 6U09	CED 13	.16
		BW -0.8	.27
	MEFC NORTHERN ADVANTAGE 208Z	WW 58	.24
JHC MS BRANDI 350B	HBSC MS JEANIE 350X	YW 81	.22
		MILK 17	.13

BW: 65 Adj. WW: 769

- Moderate frame packed with volume, performance, and length
- Ranks top 4% CED, 5% BW, 10% WW, 20% YW, and 20% MK!
- Puppy dog disposition
- Consigned by Huss Cattle

25 TTBR Mr. Tommy 194E PCA

03.20.17 ACA# 392628 PCA Bull 32.29% CA

		EPD	ACC
RDD DESTINY PCA			
RDD TOMMY BOY PCA	RDD MS NUTONE F277 2CA	CED 8	.12
		BW 2.5	.30
	JSC ADVANTAGE 257T	WW 52	.25
TTBR MS ADVANT 194Y 2CA	DCBR BECKY JO 517E 1CA	YW 73	.28
		MILK 15	.14

BW: 90 Adj. WW: 701

- Two-year-old Chiangus bull
- He can get out and move and cover some country.

HALF BLOOD SIMMENTAL BULLS



LOT 26

26 JHC Mr. Forever Relentless 59F

03.15.18 ASA# Pending 1/2 Simmental Bull --

		EPD	ACC
YARDLEY UTAH Y361			
W/C RELENTLESS 32C	MISS WERNING KP 8543U	CED -	-
		BW -	-
	SK PATTON SNELL DENALI 901	WW -	-
STYLES FOREVER LADY N59	LAGRAND FOREVER LADY 5682	YW -	-
		MILK -	-

BW: 89 Adj. WW: 700

- A very attractive half-blood Simmental bull – will have papers by sale day.
- The dam "Lady H" is a no miss cow owned with Jerry Becker, ND, no matter what breed we choose to breed her to.
- Maternal sib to the 2018 NWSS Champion Chiangus Female.
- Very athletic with a little added frame size.

27 TTBR Mr. Broker 7025F

04.02.18 ASA# Pending 1/2 Simmental Bull --

		EPD	ACC
SVF STEEL FORCE S701			
MR HOC BROKER	JM BF H25	CED -	-
		BW -	-
	TTBR MR MEYER	WW -	-
TTBR 7025	WJW 2505 (SAR PERFORMER)	YW -	-
		MILK -	-

BW: 88 Adj. WW: 650

- Sired by the famous "Broker" bull.
- Added muscle with good structure and a good disposition

*Maternal sib to the
2018 NWSS Champion
Chiangus Female*



FROZEN GENETICS SELLING CHOICE

SELLING CHOICE OF LOTS 28, 29 & 30

28 3 Embryos

Selling one package of three embryos

JHC MR YAHTZEE 001A

HBSC MR ALTERNATIVE 3724Y

RDD 169J FOXY 365 P201 2CA

TTBR MS DESTINY 7032T PCA

TTBR MR DESTINY 734R

DCBR BRANDI 032K 2CA

We have no doubt this mating will excel in producing both bulls or females. JHC Mr. Yahtzee was National Champion Chiangus Bull in 2014. The dam will make this mating a grand slam!



JHC Mr Yahtzee 001A, sire of Lot 28.

29 3 Embryos

Selling one package of three embryos

TTBR BIG PAPA 884Y

WHO MAD WHO 411F 1MC

TTBR MS PRIDE 884U 2CA

TTBR MS FUN MONEY 1028Y

TTBR FUNNY MONEY 2CM

TTBR MS SUCCESS 784T 2CA

This matting has produced a \$70,000 heifer sold to Willow Springs for the Beckett Ranch. Don't miss this opportunity to produce some show cattle for yourself.



30 3 Embryos

Selling one package of three embryos

EXCLUSIVE USE

CARD THE SITUATION

GGCC MS WIZ 67U

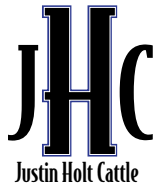
TTBR MS SUCCESS 6043S

CTR SUCCESS 02K 2CA

BEF MS COMMITMENT 8K 2CA

This mating would result in full sibs to the Lot 3 heifer in the 2018 Black Velvet Female Sale that sold to McCollum, TX. You will see more of the heifer down the road. Get in on the ground floor with this mating – it works!





13319-378th Ave.
Aberdeen, SD 57401

**FIRST CLASS
PRE-SORTED
PAID**
Montezuma, Iowa
Permit No. 30

Catalog designed by

designs by
arin
www.designsbyarin.com



NINTH ANNUAL SALE
Hybrids
FOR profit
BULL & FEMALE SALE

THURSDAY, APRIL 11, 2019
1:00 P.M. • Aberdeen Livestock 'West Barn', Aberdeen, SD